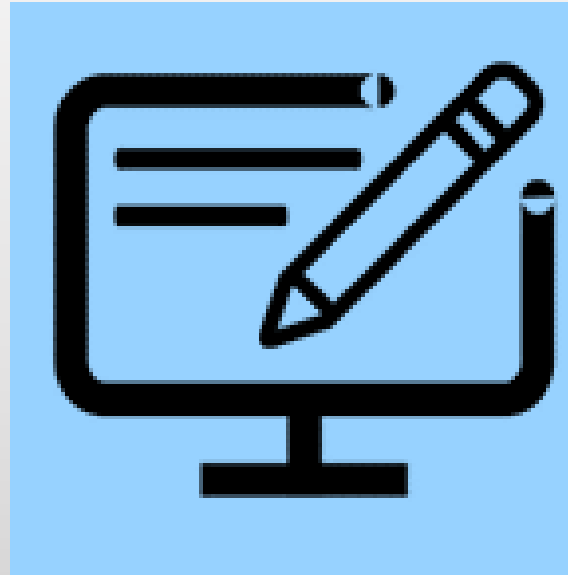


HFBI INTRODUCTORY WORKSHOP SERIES 16.6. – 10.11.2021



WS 3 – EXERCISES



HEALTH FACILITIES

1. Read carefully data analyses in Moodle (html, pdf, and doc are identical) (tables, figures, regression analyses) (also in <https://jari-haukka.shinyapps.io/HFBI/>)
2. Write description of data using tables and figures. In this assignment we use hospital stay length as key performance indicator (KPI). You may use copy-paste to include tables and figures in you report.
3. Comment briefly raw data. Is there any interesting features?
4. Interpret both regression regression models below. Did adding variable Payment Typology 1 change interpretation of model?



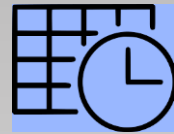
UNIVERSITIES

- a) Prepare a table of contents of lecture(s) about health facility business analytics: KPIs, cause and effect relationships, models and visualizations.
- b) Write 2-3 short research proposals on health facility business analytics: KPIs, cause and effect relationships, models and visualizations.

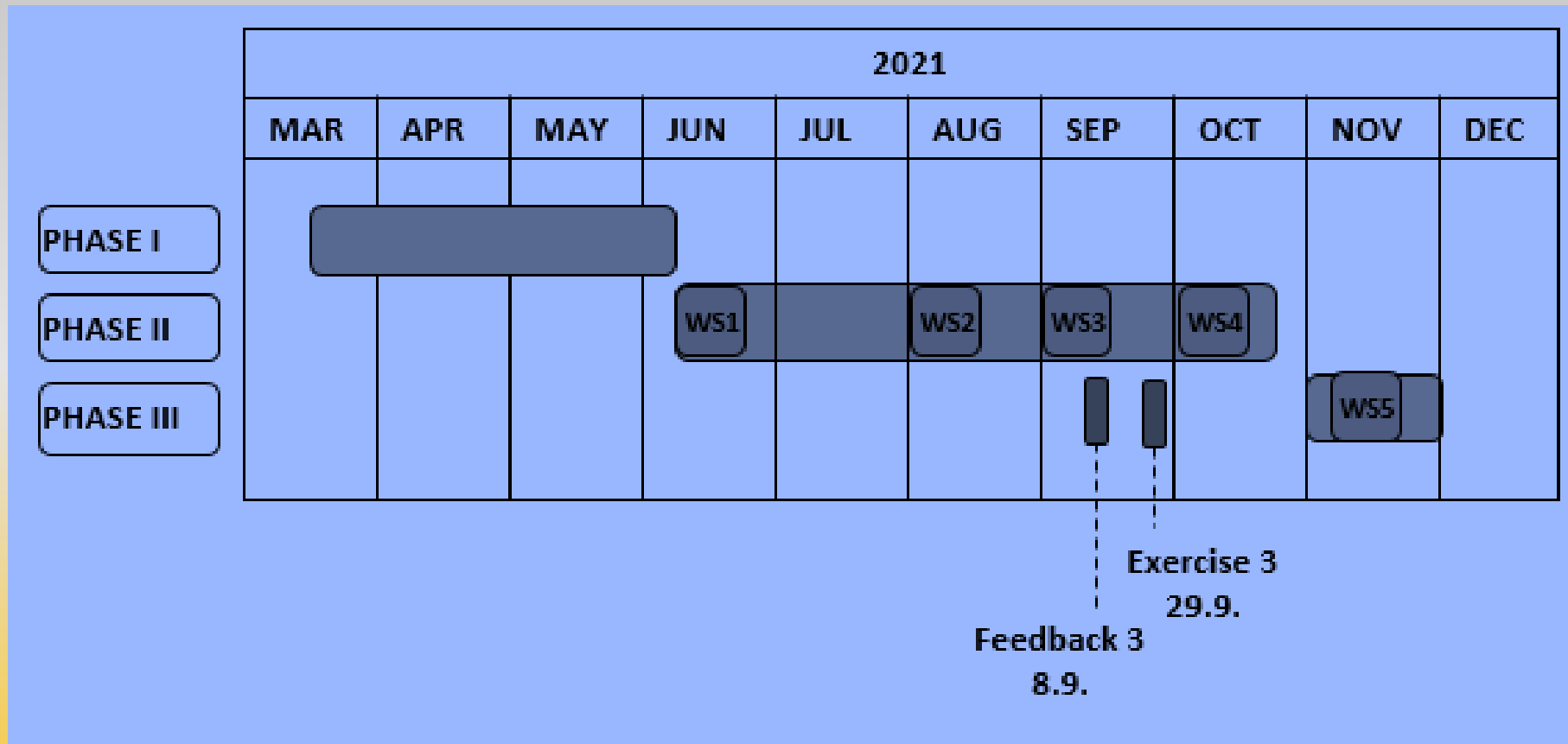


BUSINESSES

- a) Draft some product and service ideas regarding health facility business analytics: KPIs, cause and effect relationships, models and visualizations.



TIMETABLE





INNOVATIVE AND PRODUCTIVE EXERCISE EXPERIENCE!

Facilitators:

Dr. Auvo Finne, auvo,finne@synergycom.eu

Dr. Jari Haukka, jari.haukka@Helsinki.fi

Prof. Pirkko Nykänen, pirkko.nykanen@tuni.fi